

VI3 Operation Guide

Content:

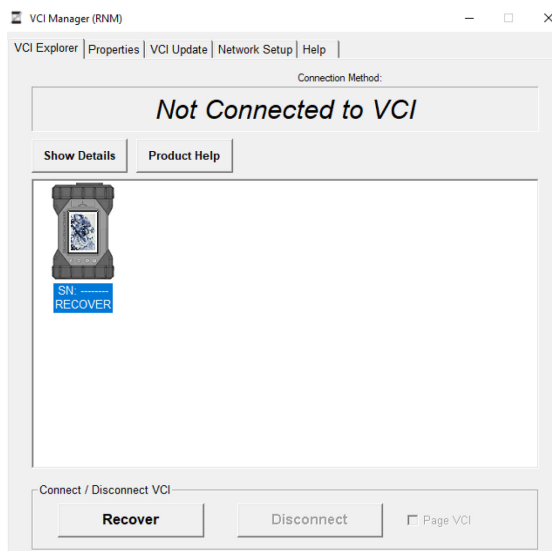
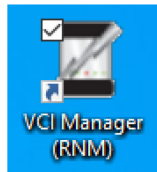
- I. Brand New VI3 out-of-box: Firmware Loading Instructions
- II. Registering VI3 to CONSULT-III plus or CONSULT4
Establishing Wireless Connection
- III. Installing Firmware Updates to the VI3
- IV. Resetting the VI3 and Reinstalling Firmware

I. Brand New VI3 out-of-box: Firmware Loading Instructions

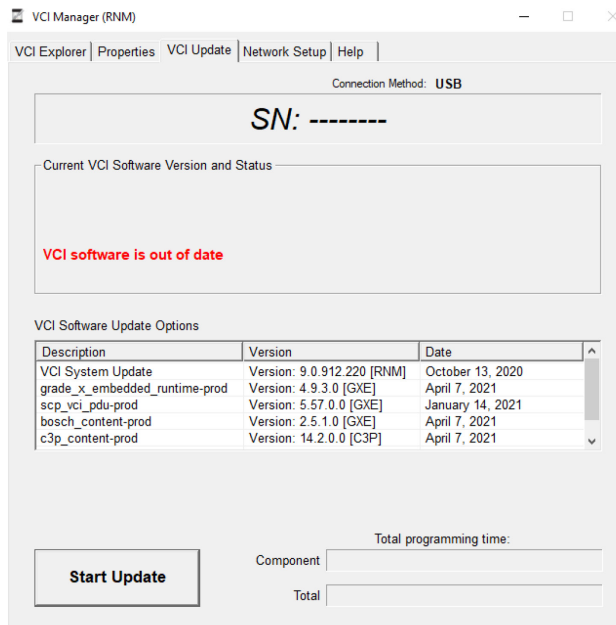
1. Connect the CONSULT PC to VI3 using the USB cable provided. Cable must always be used when installing firmware.



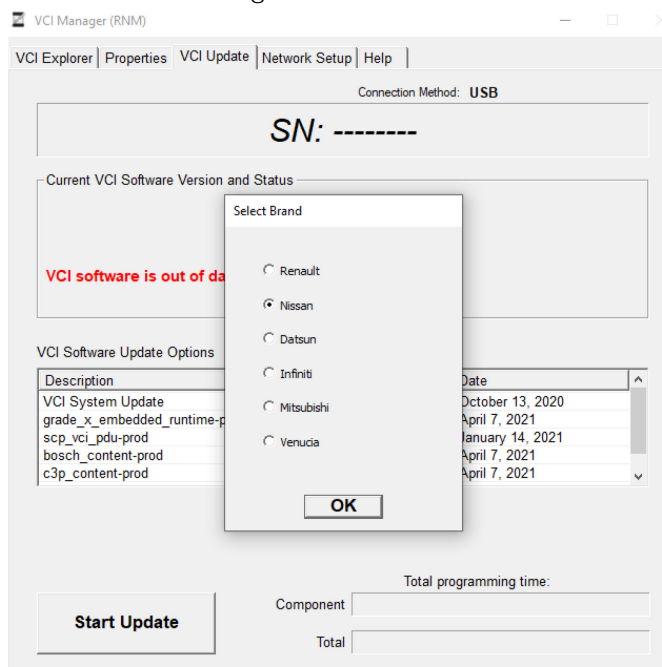
2. Double click the "VCI Manager (RNM)" on your desktop to open the application.



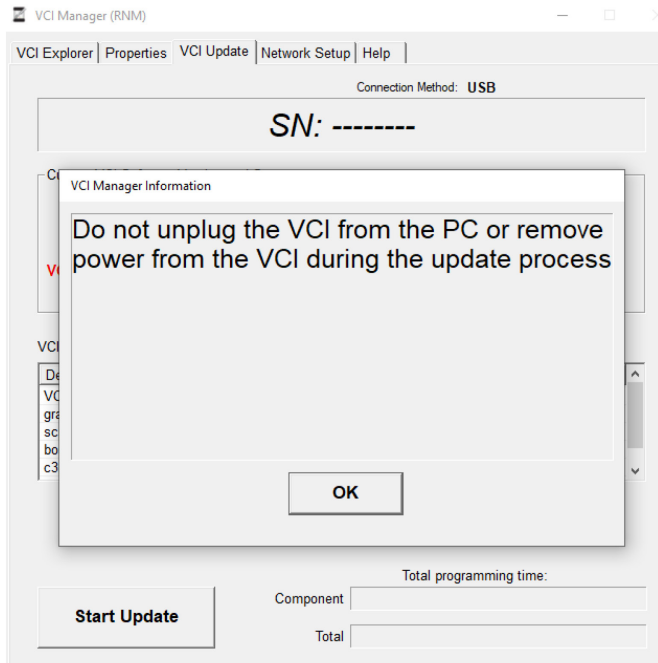
4. Click on "Start Update"



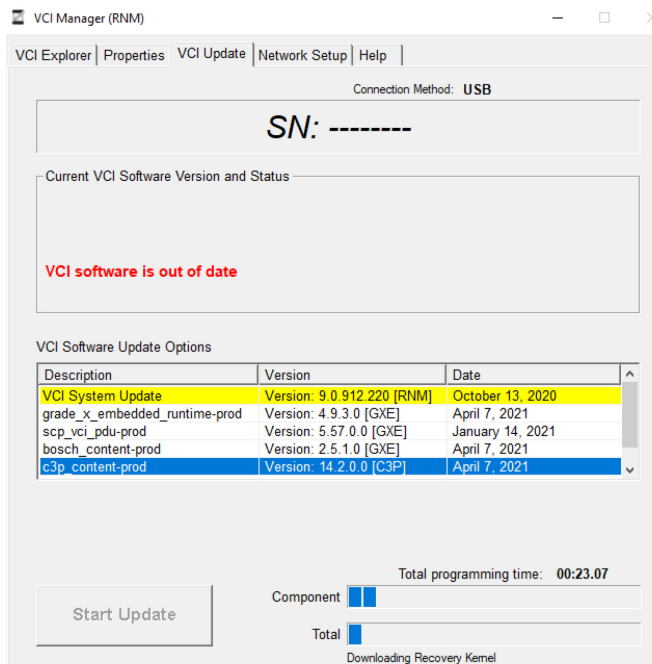
5. Select the brand logo and click OK.



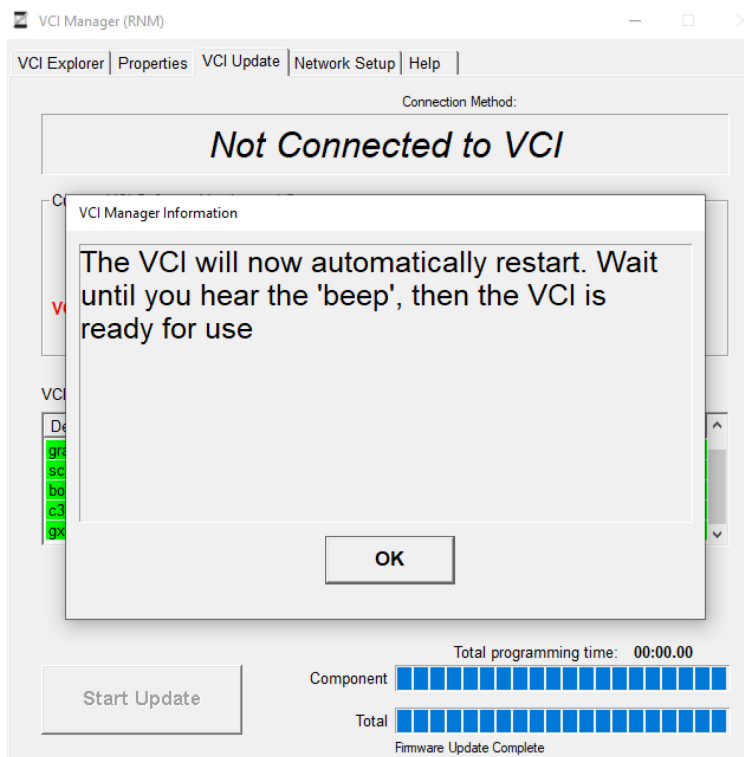
6. Click OK



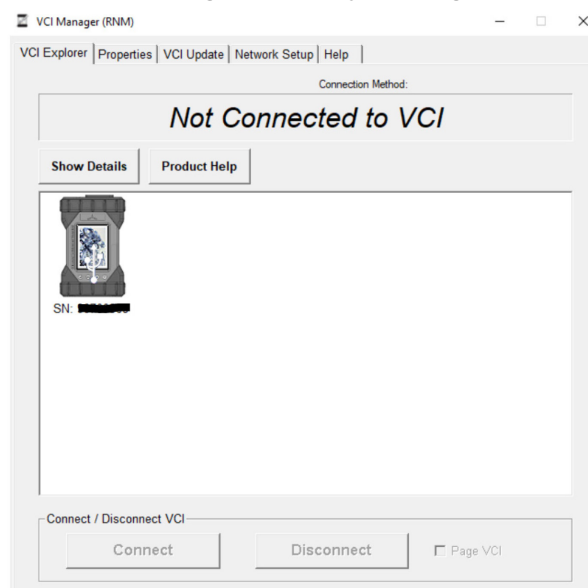
7. The loading process will began and complete in less than 5 minutes.



8. When this screen is displayed, firmware loading is completed. Click OK.



9. Close VCI Manager (RNM) by clicking on "X" in the top right corner.



II. Registering VI3 to CONSULT-III plus or CONSULT 4/Establishing Wireless Connection

Note: A USB cable must be used to register the VI3 serial # to CONSULT-III plus. The serial # is located on the back of the VI3 and this process will auto register the serial # to CONSULT-III plus.

1. Insert the Wi-Fi dongle in a USB port of the CONSULT PC. The green light will continue blinking on the dongle while inserted.



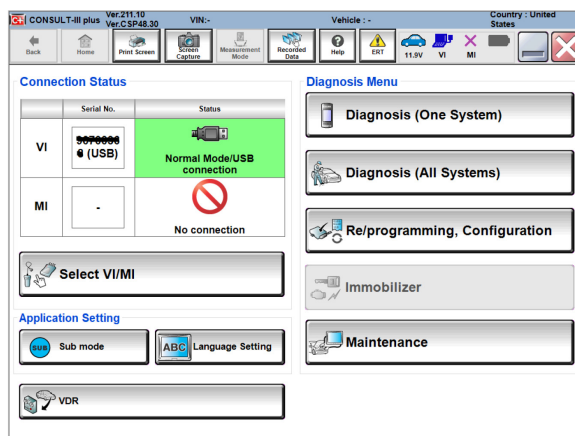
2. Connect the CONSULT PC to VI3 using the USB cable provided. Connect the DLC2 cable between the VI3 and vehicle.



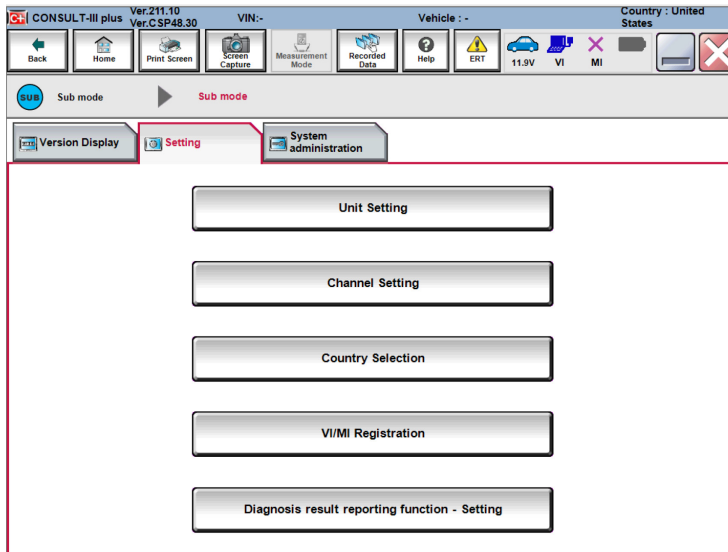
3. Click on CONSULT-III plus icon to open the application.



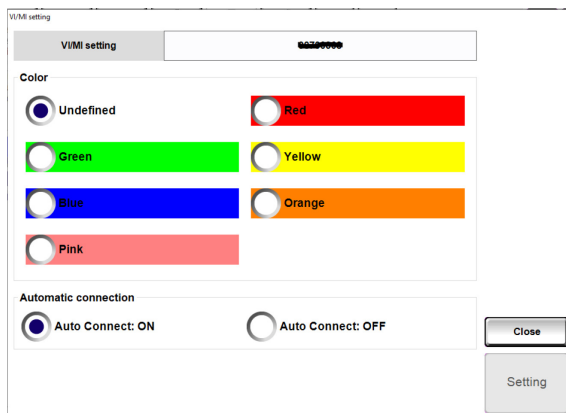
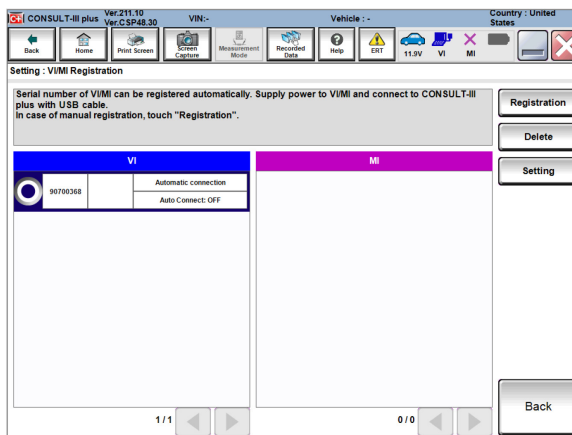
4. The "Normal Mode/USB connection" will appear noting an establish connection between the CONSULT-III plus and the vehicle. Click on the "Sub Mode" button to view the serial # registration.



5. Click on the "VI/MI registration button."

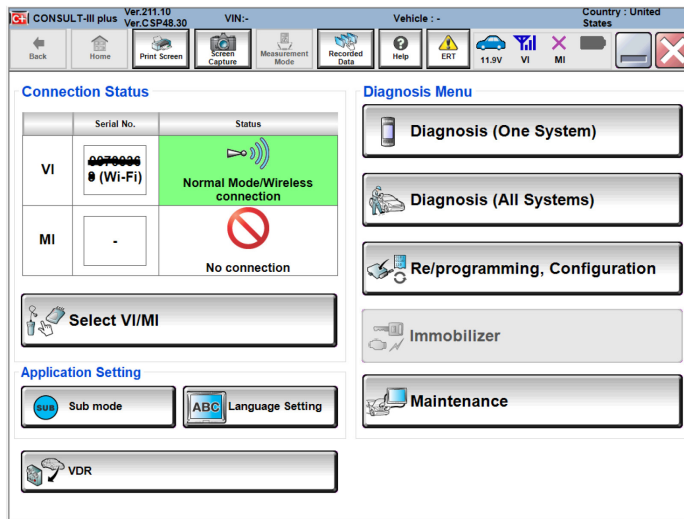


6. The serial # will appear and registration is complete. Click on the "Setting" button to set your preferred connection method (Auto Connection ON or Auto Connection OFF).



7. Return to the "Home" screen and close CONSULT-III plus.
8. Remove the USB cable between the CONSULT PC to VI. Keep the DLC2 cable connected between the VI3 and vehicle.

9. Open CONSULT-III plus. If the VI3 was set to "Auto Connection ON", the "Normal Mode/Wireless connection" will appear. There is now an established wireless connection between the CONSULT-III plus and the vehicle. If the "Auto Connection OFF" was set, click on "Select VI/MI" to establish the wireless connection.



10. For CONSULT 4 (C4), first connect the PC to VI3 using a USB cable. Connect VI3 to the vehicle. Open C4 and establish connection with the VI3 and the vehicle. Close C4 and remove USB cable. The next time you open C4, the wireless connection will be established.

III. Installing Firmware Updates to the VI3

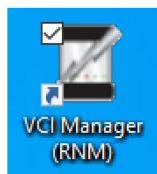
The updates are released during a CONSULT-III plus update and pushed to the VCI Manager (RNM) for downloading. Not all CONSULT-III plus software updates will contain a VI3 firmware update.

After install of the latest CONSULT-III plus update, proceed to the VCI Manager (RNM) and follow the installations instructions below. Failure to install the latest VI3 firmware update will prevent the VI3 from communicating with the latest version of CONSULT-III plus or CONSULT 4 software.

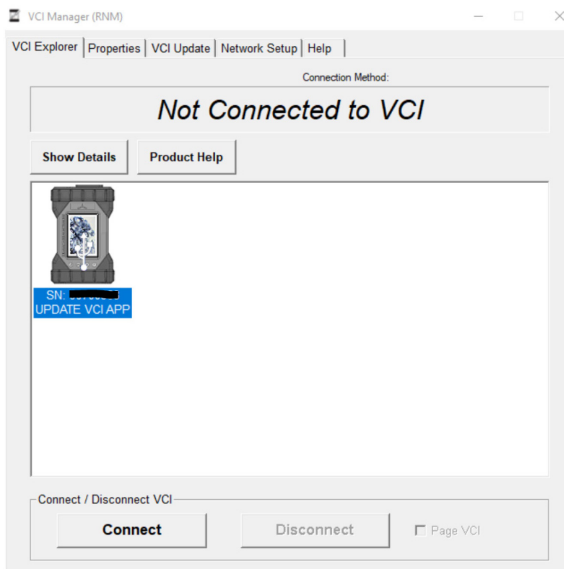
1. Connect the CONSULT PC to VI using the USB cable provided. Cable must always be used when installing firmware updates.



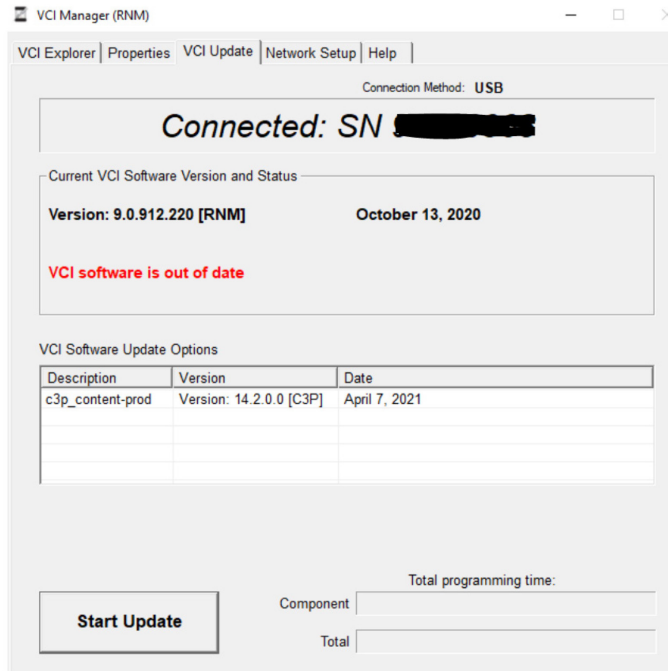
2. Double click the "VCI Manager (RNM)" on your desktop to open the application.



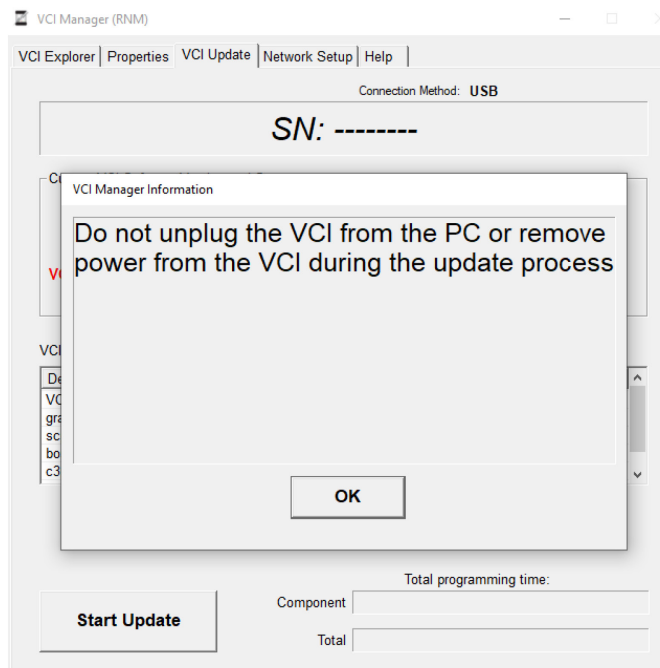
3. Click on the VI icon below and the "Connect" button will appear. Next click on the "Connect" button.



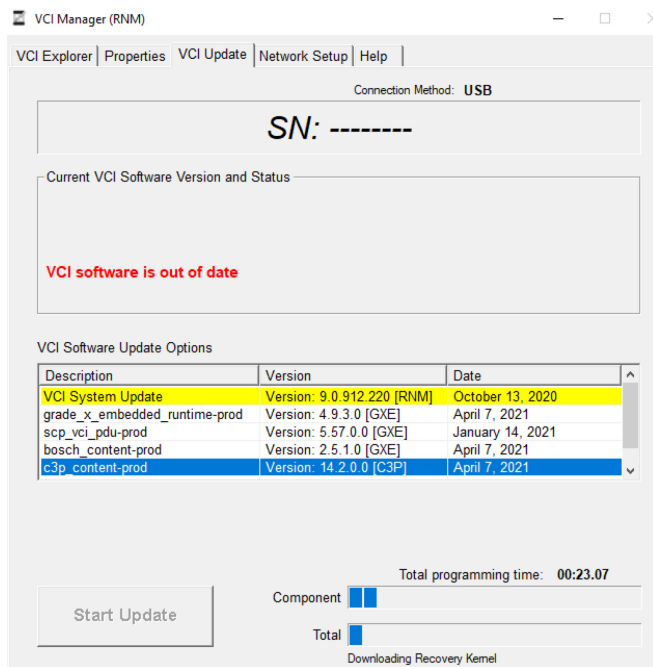
4. Click on "Start Update". Update will take less than 2 minutes to complete.



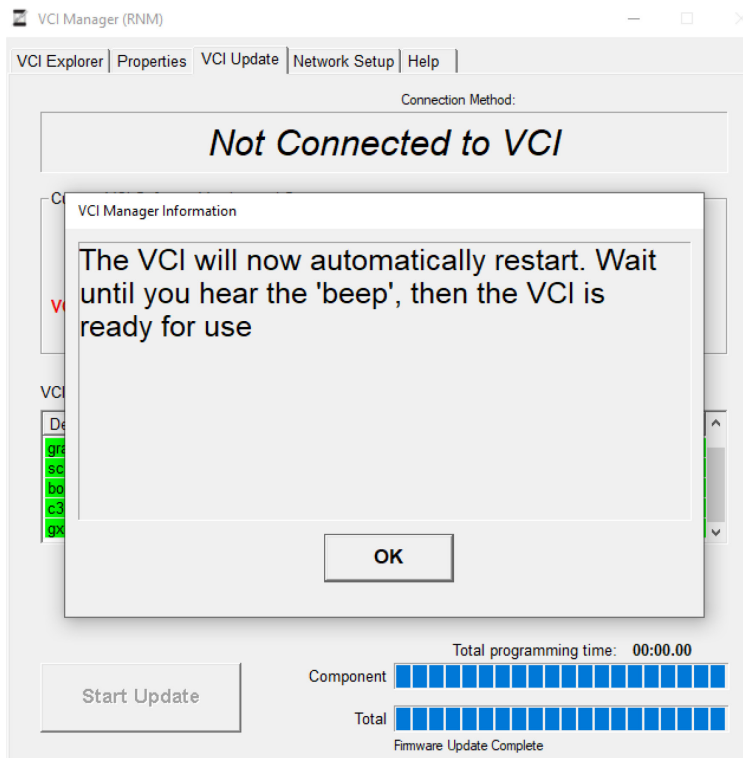
5. Click OK



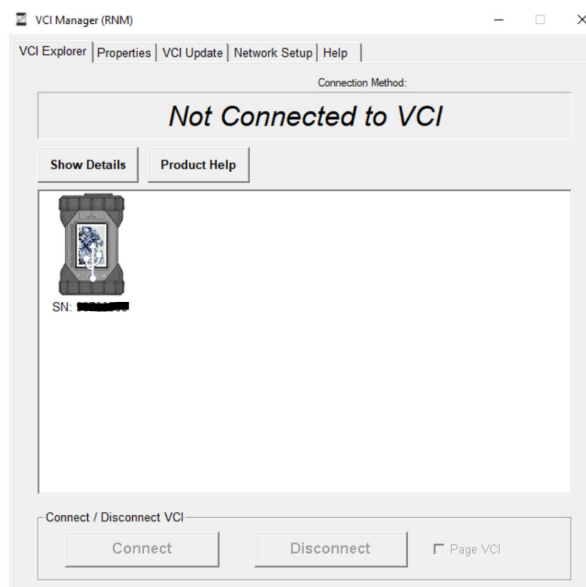
6. The download process will begin.



7. When this screen is displayed, firmware update is completed. Click OK.



8. Close VCI Manager (RNM) by clicking on "X" in the top right corner.

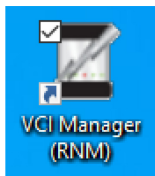


IV. Resetting the VI3

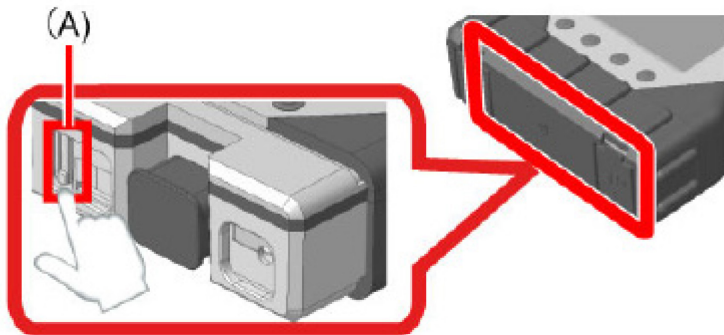
Note: If an error occurs in VI3 behavior, it may be necessary to reset and reinstall the firmware.



2. Double click the "VCI Manager (RNM)" on your desktop to open the application.



3. Remove the lower VI3 cover to locate the reset button (A). Press and hold the reset button (A) for approximately 5 seconds, VI will reset. The VI3 is now back in the "Recover" mode and ready for firmware loading.



VI3 FAQ

1. What are the components of the VI3 kit?
VI, OBD cable, USB cable and WLAN dongle



2. Is the VI3 fully compatible with CONSULT-III plus?
Yes
3. Which VI is needed for the new CONSULT 4 diagnostic software?
CONSULT 4 is the next generation software for the new 2023 Nissan Ariya and future major model releases. CONSULT 4 software will only work with the VI3 and not with the VI2.
4. How can I purchase a new VI3?
Contact Techmate @ 1-833-397-3493, Part # J-52925-VI3
5. What are some differences between the VI3 and VI2?
 - a. VI3 firmware is manually installed by the user when purchased new. See "Operation Guide".
 - b. VI3 firmware updates are manually installed by the user. See "Operation Guide".
 - c. VI3 must be allow to boot-up (20 seconds) before using.
 - d. A WLAN dongle will be inserted in the PC to communicate wireless to the VI3.
6. How do firmware updates get installed to the VI3?
Initial firmware and future updates are loaded into the VI3 by the "VCI Manager (RNM)" application located on your desktop. See "Operation Guide" guide for instruction.
7. What is the "VCI Manager (RNM)"?
Software that is used for configuring VI3 hardware settings and updating the firmware.
How much time does the initial first time firmware update take?
5 minutes or less
8. How much time does future firmware updates take?
2 minutes or less
9. How do I get notified of an available VI3 firmware update?
After each CONSULT-III plus update, check the VCI Mgr (RNM)" for firmware updates.

10. The VI3 is frozen and not communicating with the vehicle?

Follow the "Resetting the VI3 and Reinstalling Firmware" in the "Operation Guide".

11. I have updated my CONSULT-III plus software and the VI3 will no longer connect via wireless or USB cable?

Connect the CONSULT PC to VI3 using the USB cable provided. Open the VCI Manager (RNM) and confirm the firmware is up to date.

12. I have rolled back to a previous version of CONSULT-III plus and now my VI3 will not connect to CONSULT-III plus?

The VI3 firmware must be compatible with the current CONSULT-III plus version installed. Connect the CONSULT PC to VI3 using the USB cable provided. Open the VCI Manager (RNM) and confirm if the firmware needs updated. Click "Start Update" if prompted.

